



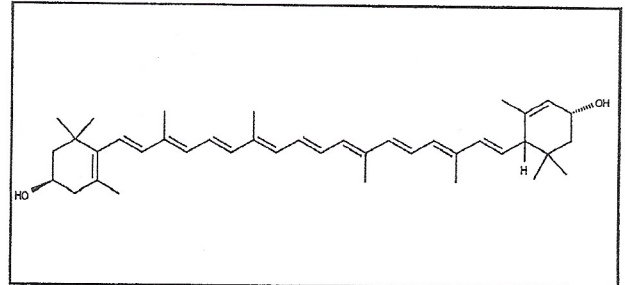
INDOFINE Chemical Company, Inc.

121 Stryker Lane, Bldg. 30
Hillsborough, NJ 08844 USA
Phone: (908) 359-6778; Fax: (908) 359-1179

Certificate Of Analysis

020306S **LUTEIN** **Lot No.: 22060871**

| | |
|-------------|--|
| CAS RN | 127-40-2 |
| MOL FORMULA | C ₄₀ H ₅₆ O ₂ |
| MOL WEIGHT | 568,89 |



| TEST | METHOD | UNIT | SPECIFICATION | RESULT |
|---------------|------------------------------|--------|------------------------|---------|
| Appearance | Visual | | Powder | Conform |
| Melting point | | °C | 174-181 | 180-181 |
| Potency* | UV in methanol + 0,5% DCM | nm | 421, 444, 472 | Conform |
| | E1% | | 2520 +/- 100 at 444 nm | 2570 |
| | | | 2320 +/- 100 at 472 nm | 2360 |
| Purity | HPLC | % area | ≥ 92,0 | 95,7 |

*Despite the specific and intensive care taken with these products, they are very fragile.

We recommend that you confirm product purity by measuring the E1%

CHROMATOGRAPHIC PURITY / HPLC

Column : YMC-Carotenoid 250 x 4,6 mm - 5 µm

Mobile phase : 15/80/5 isocratic 3 min then 25/70/5 gradient in 17 min then 85/10/5 in 10 min

A:TMBE B:MeOH C:ACN

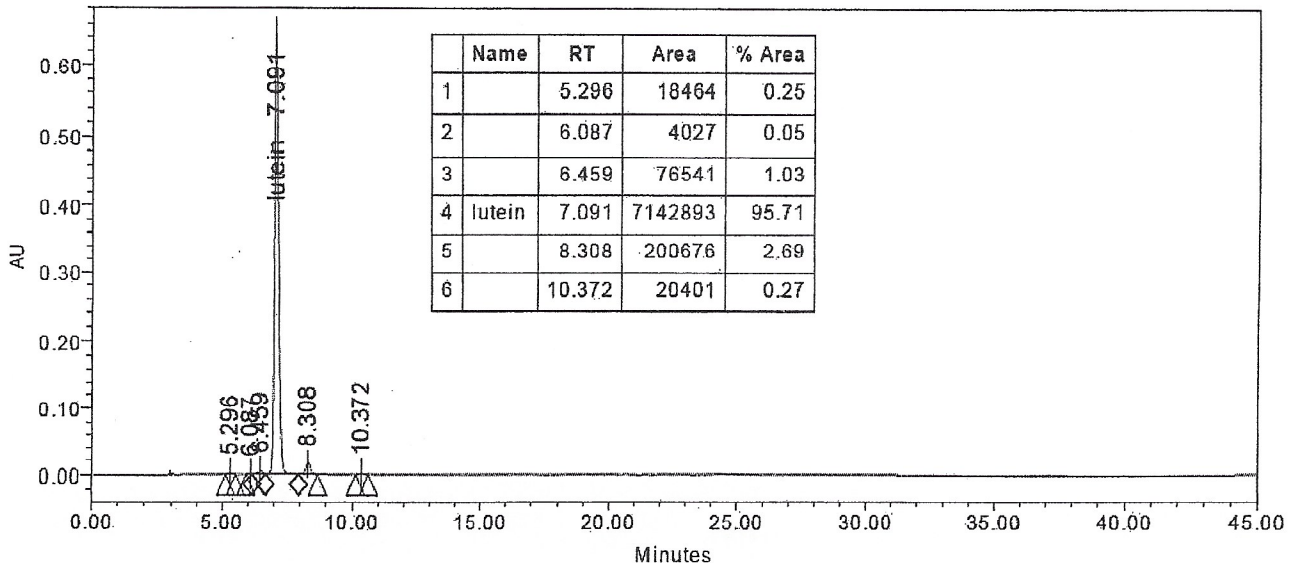
Flow rate 1 ml/min

Temperature 30°C

Injection volume 5 µl

Detection : UV 450 nm

Injection solvent DCM / Methanol (5/15)



LONG TERM STORAGE : Below -15°C in a dry and dark place